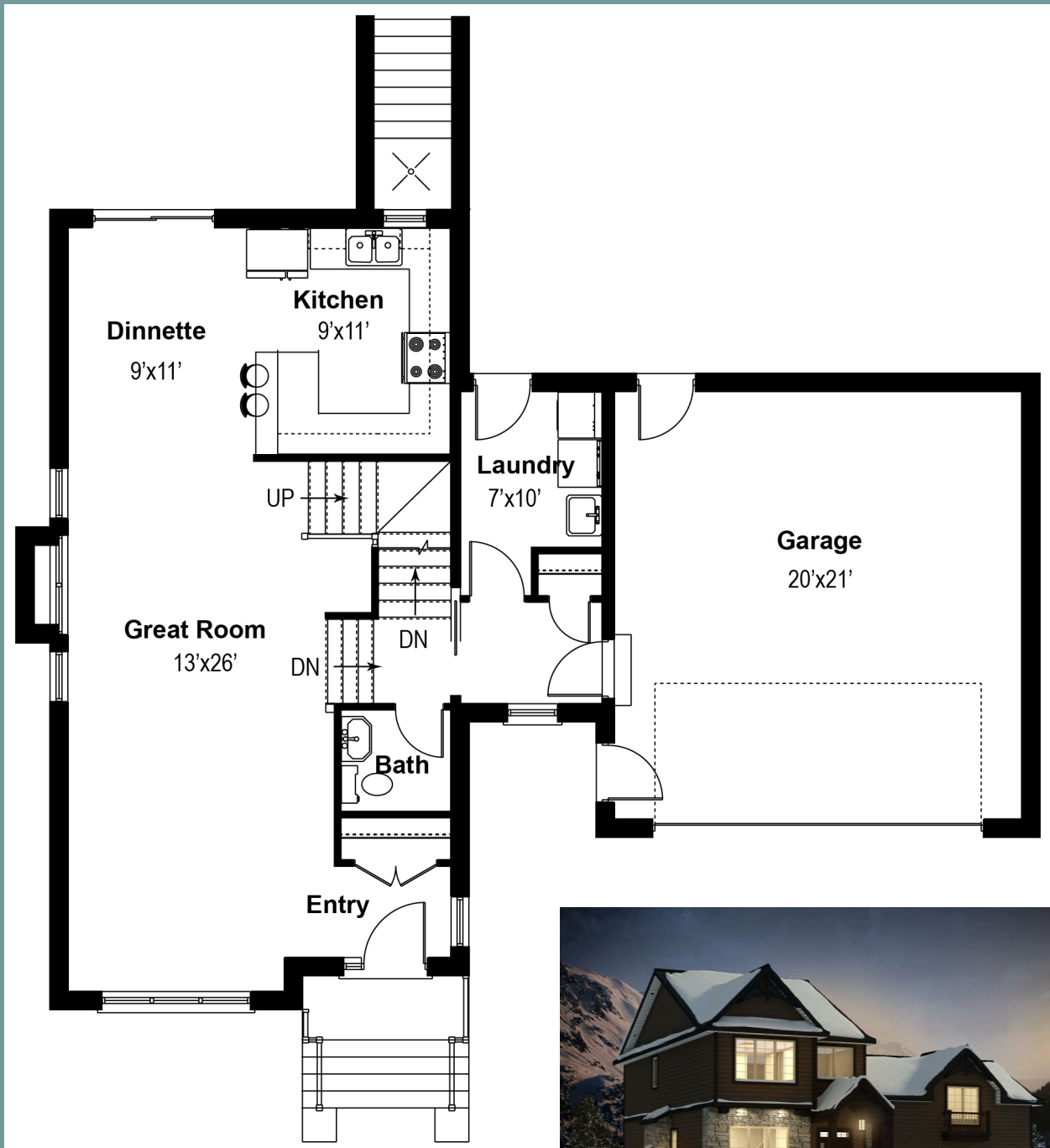




## THE ROSS PEAK

Two-Storey Living with Walkout Basement  
Main Floor Living (887 sq ft) • Optional Above Garage Bonus Room (462 sq ft)



Revelstoke Mountain Homes Ltd. of Revelstoke, British Columbia, reserves the right to modify plans and specifications as deemed necessary. Renderings and Photos are for illustrative purposes only. E. & O. E.